
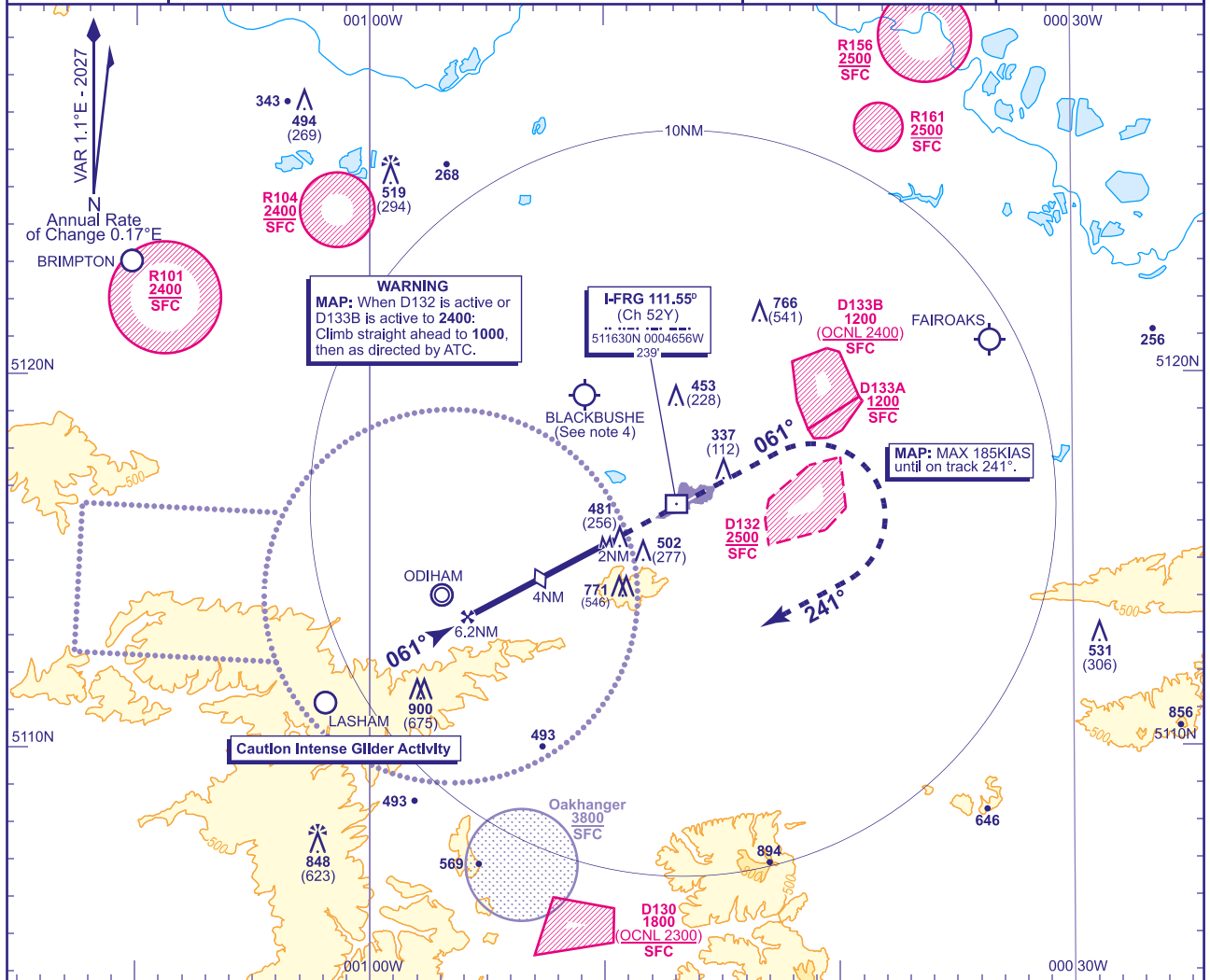


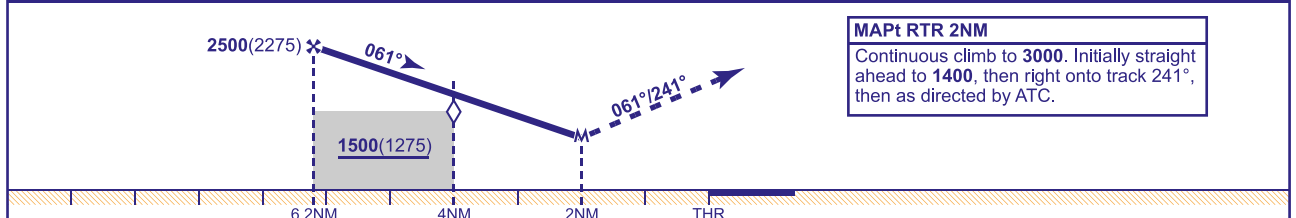
INSTRUMENT APPROACH CHART - ICAO

FARNBOROUGH
SRA RTR 2NM
RWY 06
(ACFT CAT A,B,C,D)

	APP 134.355 125.250	FARNBOROUGH RADAR	AD ELEVATION 238	TRANSITION ALTITUDE 6000
	TWR 122.780	FARNBOROUGH TOWER	THR ELEVATION 225	
	RAD 130.055	FARNBOROUGH DIRECTOR	OBSTACLE ELEVATION 900 AMSL (675) (ABOVE THR)	
	ATIS 128.405	FARNBOROUGH INFORMATION	BEARINGS ARE MAGNETIC	



RADAR ADVISORY HEIGHTS Gradient 6.1%, 372FT/NM				
NM	6.2	5.0	4.0 (SDF)	3.0
ALT(HGT)	2500(2275)	2080(1855)	1710(1485)	1340(1115)



Aircraft Category		A	B	C	D	Rate of descent	G/S KT	160	140	120	100	80
OCA (OCH)	Procedure	1020(795)	1020(795)	1020(795)	1020(795)		FT/MIN	990	870	740	620	500
VM(C)OCA (OCH AAL)	South of RWY 06/24	1020(782)	1020(782)	1170(932)	1170(932)							

- NOTE**
- MSA are based on obstacle/terrain clearance. Pilots are to ensure safe navigation to remain clear of active Danger Areas.
 - SUA AIS available on Farnborough Radar 133.440 when open; other times London Information on 124.600.
 - CAT B,C and D no circling when EGD132 is active. CAT C and D no circling when EGD133A and EGD133B are active.
 - Pilots are reminded of the close proximity of Blackbushe aerodrome, 3.8NM north west of Farnborough and to remain clear due to intense GA activity.
 - See Loss of Communication Procedures in EGLF AD 2.22 Flight Procedures.
 - Radar Advisory Heights are to Touchdown.